

What an amazing day! We were all up bright and early and set-off for London. After a busy few days in Cambridge, it was lovely to take a day trip together and explore this beautiful capital city.

In the morning, the students were given the choice of visiting either the Natural History Museum or the Science Museum, where they could explore all the fascinating educational sites and displays on offer. Highlights included the giant replica model of a blue whale in the Natural History Museum, as well as exhibitions on human biology, creepy crawlies and a small talk on fossils and rocks from a volunteer in the museum.

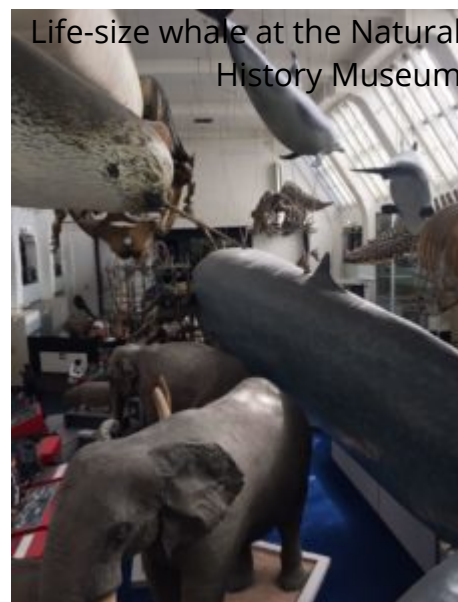
We then all took a short walk to the iconic building of Harrods where students were given the opportunity to look inside or grab lunch and do some shopping in the nearby area. Many students were mesmerised by the food hall, clothing and toys on offer in Harrods – and the size of the shop itself!

After lunch, we then headed back to the museum area once more, where students were given the choice of visiting the Science Museum or the Victoria & Albert Museum – famous for its beautiful arts, fabric, furniture and clothes collections.

With more time in the afternoon, the Science museum students were able to visit the interactive floor with fun science games, learn about the story of the Titanic and soak up the overwhelming world of Space and our solar system!

One highlight of the Victoria & Albert Museum was the glassworks floor, where everything was made of glass – from the Pre-Renaissance through to modern day, with colour and design aplenty. There were different types of glassware, jewellery and vases – there was even a staircase and banisters made solely of glass!

We finished the day with a gourmet burger and fries before heading back to Cambridge. We had such a full and fantastic day together and it was a brilliant way to celebrate a great first half of week 1 – bring on the next instalment tomorrow!



Visit us at www.reachcambridge.com

Email: info@reachcambridge.com
International Telephone: +44 870 8031 732
Registered Address: The Guildhall, Market Square, Cambridge, CB2 3QJ, UK
Reach Cambridge Ltd. is registered in England and Wales
Company No: 05155407

Officially accredited by



Click through the gallery of photos (some from our [Instagram Story](#), which is updated daily) below.

Explorer Sale

From now until 11.59pm on 17th April, you will save £200 when you apply and pay your deposit for 'Explorer' (Program 1, running 2-22 July 2017). See [our COURSES page](#) for further details. For more information about what the Explorer course involves, keep a weather eye on our blog and newsletter – you can sign up for our newsletter in just a few seconds via [this link](#).

Spring Registration NOW OPEN

Enjoying the blog? Considering joining us for our Spring program next year? You can now register your interest for SPRING 2018 by clicking [here](#).

Visit us at www.reachcambridge.com

Email: info@reachcambridge.com
International Telephone: +44 870 8031 732
Registered Address: The Guildhall, Market Square, Cambridge, CB2 3QJ, UK
Reach Cambridge Ltd. is registered in England and Wales
Company No: 05155407

Officially accredited by

